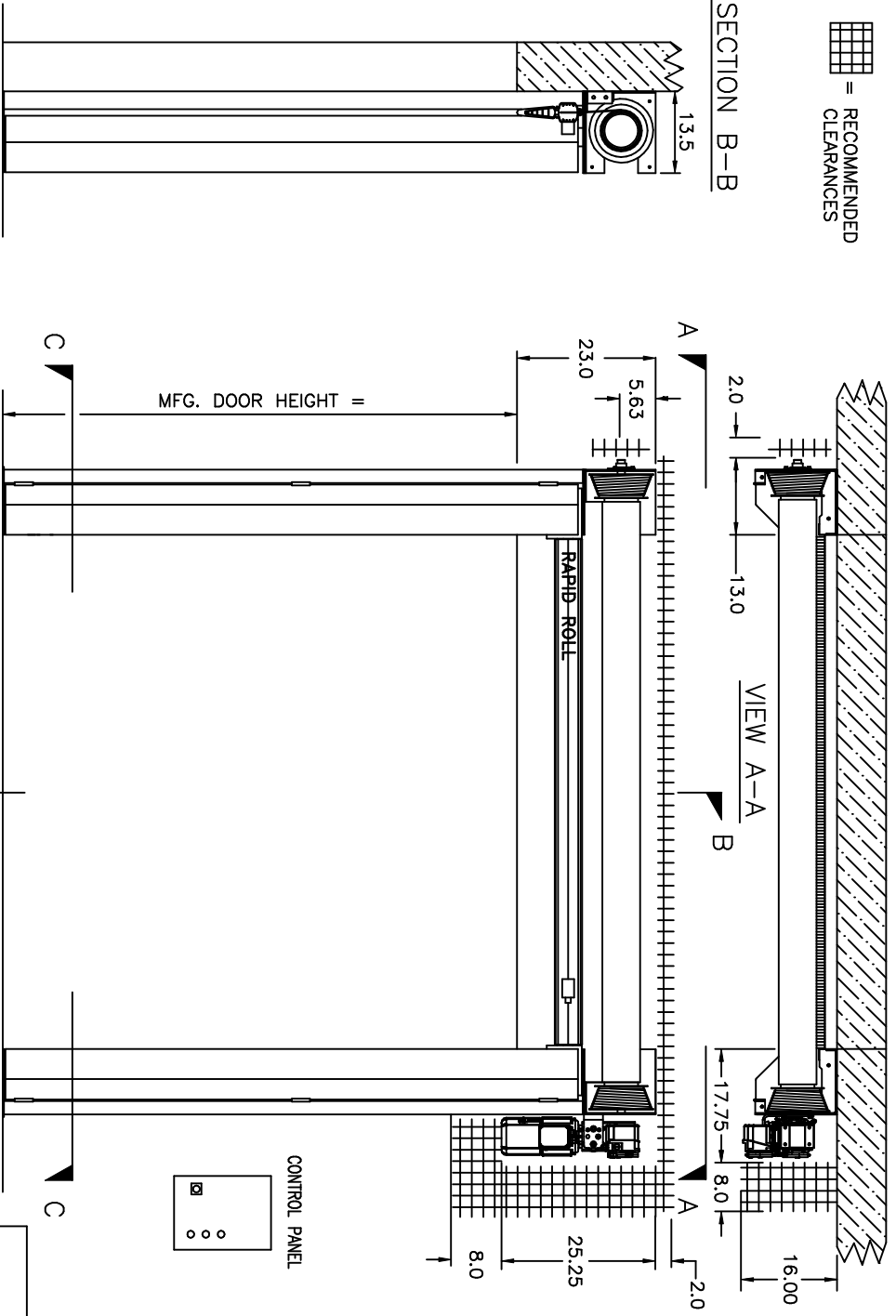


 = RECOMMENDED CLEARANCES

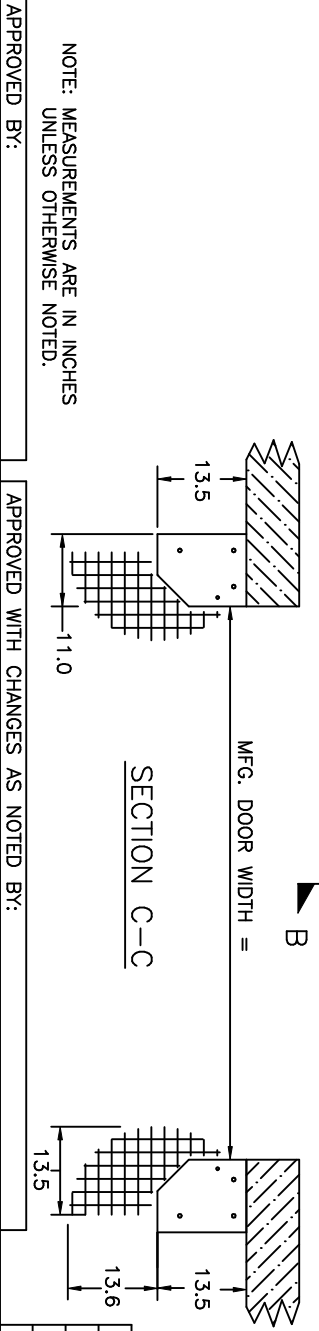
SECTION B-B



RAPID ROLL® DOOR 570
SPECIFICATIONS & OPTIONS

OPENING SIZE	W =	H =
MFG. DOOR SIZE	W =	H =
OPERATOR LOCATION	RIGHT-HAND DRIVE	
	LEFT-HAND DRIVE	
OPERATOR SPEED	1 SPEED	
	2 SPEED	
CONTROL PANEL	ACS-50	
	PLC W/CONTACTORS	
	ALSTAR WITH LIMIT	
	ALSTAR WITH ENCODER	
PRIMARY VOLTAGE (3 PHASE)	208 - 240 V	
	440 - 480 V	
	575 V	
DOOR ACTUATOR (Quantity)	1 BUTTON STATION (Std.)	
	PULL SWITCH(4)	
	FLOOR LOOP RECEIVER	1 OR 0
	PHOTOCELL	
	MOTION DETECTOR(4)	
	RADIO RECEIVER	1 OR 0
DOOR PANEL	BLUE	
	ORANGE	
SIDE FRAME COLOR	BLUE (Painted Steel)	
	BROWN (Painted Steel)	
	SILVER (Painted Steel)	
HOOD	FRONT	
	FULL ROLL COVER	
WINBARS	FRONT	
	REAR	
WINDOW	18"x18" WINDOW	
MANUAL HOIST W/DISCONNECT		
Comments:		

DOOR SPEED DATA FOR:
 o 1SP: Opens/Closes @ 32 in./sec
 o 2SP: Opens @ 64 in./sec
 Closes @ 32 in./sec
 ADDITIONAL HEIGHT REQ'T. FOR:
 o WINDBAR = 4"
 o 2-Speed Operator = 4"
 o WINDBAR & 2-Speed Operator = 6"



CUSTOMER	DRAWN BY J.C.R.	ALBANY INTERNATIONAL Norfolk Division
LOCATION	DATE	DRAWING NAME
DEALER/SALESMAN	REVISION	RAPID ROLL DOOR 570
DOOR #	SCALE	DRAWING NUMBER
	1:20	570-0012

NOTE: MEASUREMENTS ARE IN INCHES UNLESS OTHERWISE NOTED.

APPROVED BY:

APPROVED WITH CHANGES AS NOTED BY: